

32 oz Cut Pile

product specifications

Construction:	Cut Pile Broadloom
Maintenance:	Dry Cleaning is recommended though not required
Traffic Rating:	Residential and Heavy Commercial
Warranty:	10 year Wear/IAQ Certified GLP 2049
Fiber Type:	100% Ultron Type 6.6 Nylon
Indoor Air Quality:	Green Label Plus #2049 Certification

Finishing

Dye Method:	DigiChrome Injection 25.4 pixels/inch
Heat Set:	Superba
Stain/Soil Treated:	Commercial Anti-Soil Protection

Construction

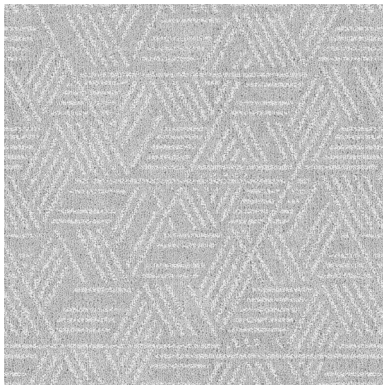
Face Weight:	326 oz/sq yd
Yarn Ply:	2 ply
Stitch Rate:	12 SPI
Gauge:	1/10th
Pile Height:	0.238
Tufted Density:	120
Primary Backing:	Synthetic
Total Weight:	58 oz/sq yd

Performance

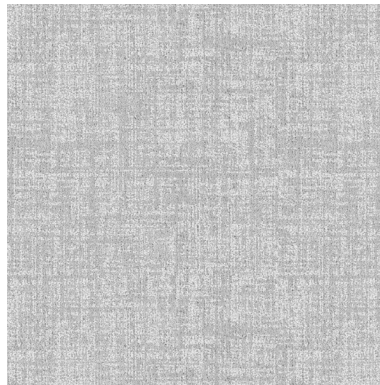
Density:	4840
Weight Density:	154,891
Density Factor:	158,400
Traffic Level:	Recommended for both Residential and Commercial
Static Control:	Less than 3.5 KV
Flooring Radiant Panel:	Less than .45 watt/cm sq, Class 1 (ASTM 648)
Smoke Density:	Less than .450; Pass (ASTM E622)
Methanimine Pill:	Self Extinguishing

Textures

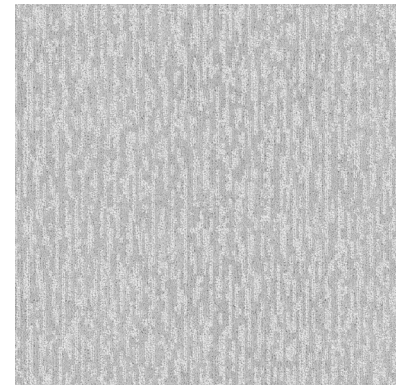
texture options for print carpet



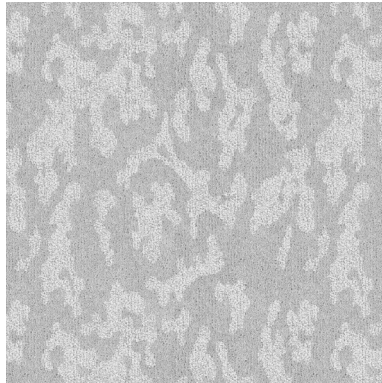
Geo 18"x22" repeat



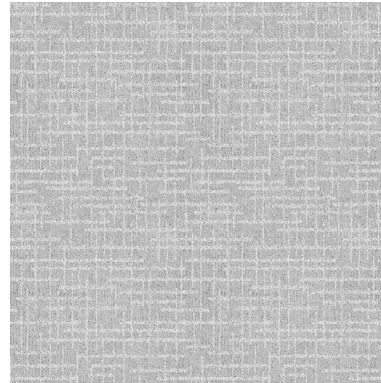
Abstract Grid 18"x18" repeat



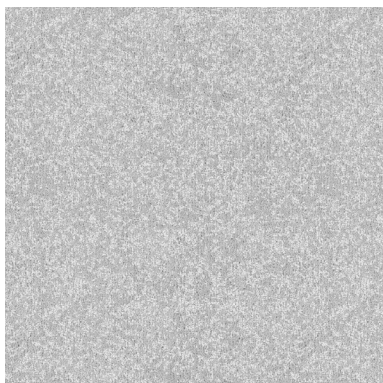
Blurred Vision 24"x24" repeat



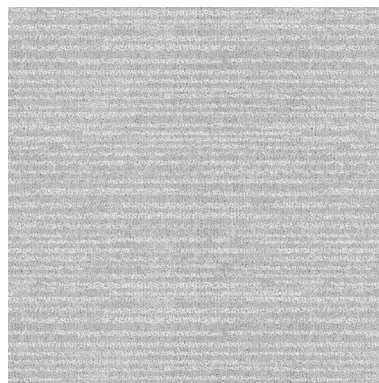
Clouds Base 18"x18" repeat



Linen 12"x13" repeat



London Fog 18"x18" repeat



Stria 18"x17" repeat



Swirls 36"x27" repeat