

36 oz Infinity Print Base

product specifications

Construction:	Infinity Tip Shear
Maintenance:	Dry Cleaning is recommended though not required
Traffic Rating:	Residential and Heavy Commercial
Warranty:	10 year Wear/IAQ Certified GLP 2049
Fiber Type:	100% Ultron Type 6.6 Nylon

Finishing

Dye Method:	DigiChrome Injection 25.4 pixels/inch
Pattern Clarity:	836,127 pixels per sq yd
Color Positions:	16 Unique Standard or Custom Colors
Heat Set:	Superba
Stain/Soil Treated:	Commercial Anti-Soil Protection

Construction

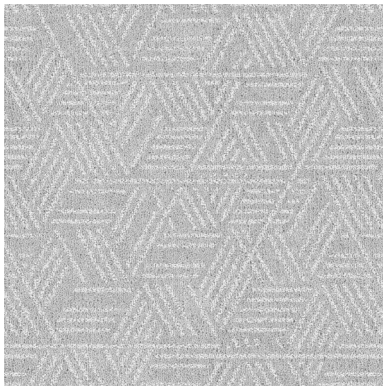
Face Weight:	36 oz/sq yd
Yarn Ply:	2 ply
Stitch Rate:	13 SPI
Gauge:	1/10th
Pile Height:	0.250
Tufted Density:	130
Primary Backing:	Synthetic
Total Weight:	62 oz/sq yd

Performance

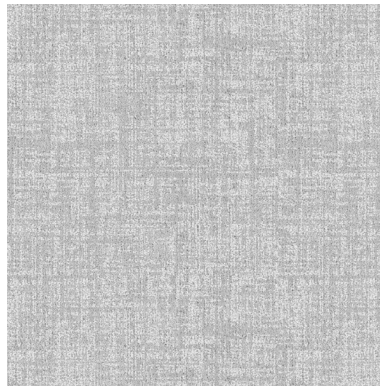
Density:	5184
Weight Density:	186624
Density Factor:	308100
Static Control:	Less than 3.5 KV
Flooring Radiant Panel:	Class 1 (ASTM 648)
Smoke Density:	Less than .450 (ASTM E622)
Methanimine Pill:	Self Extinguishing

Textures

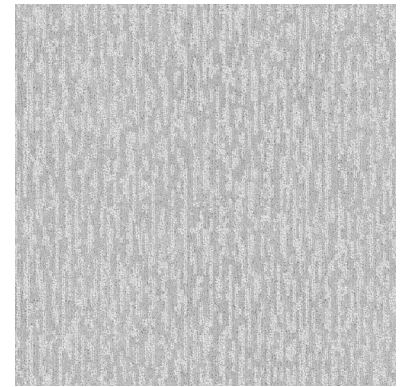
texture options for print carpet



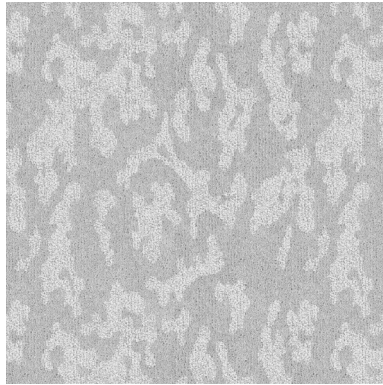
Geo 18"x22" repeat



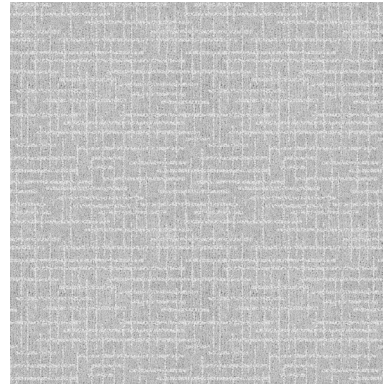
Abstract Grid 18"x18" repeat



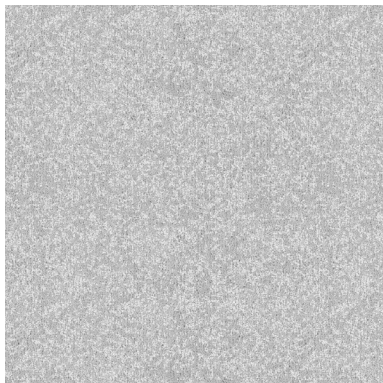
Blurred Vision 24"x24" repeat



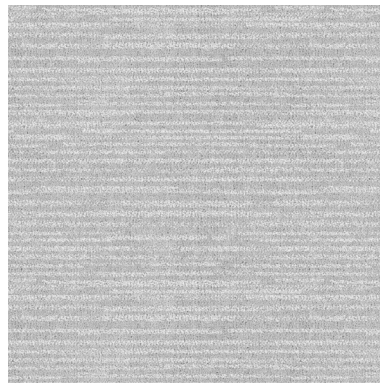
Clouds Base 18"x18" repeat



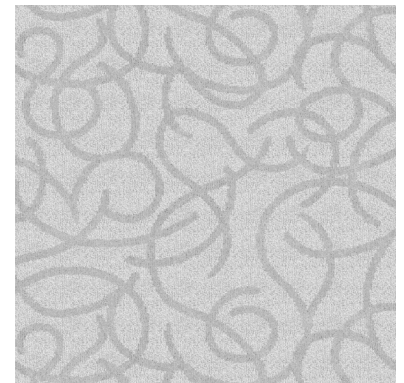
Linen 12"x13" repeat



London Fog 18"x18" repeat



Stria 18"x17" repeat



Swirls 36"x27" repeat